



SBX IP 320™

BLF Manager Installation v. 1.91



 **VERTICAL™**

Contents

1. BLF MANAGER INSTALLATION	3
1.1. REQUIREMENTS	3
1.2. INSTALLATION.....	3
1.3. AUTOMATIC START.....	3
1.4. CONFIGURATION.....	3
1.5. UNINSTALLATION.....	3
2. BLF MANAGER IN DETAIL.....	4
2.1. BLF MANGER SCREEN.....	4
2.2. SYSTEM LIST WINDOW (STATUS OF SYSTEMS).....	4
2.3. STATION LIST WINDOW (EXTENSION STATUS)	5
2.4. NETWORK TRAFFIC WINDOW	5
2.5. ETC MENU.....	5

1. BLF Manager Installation

1.1. Requirements

OS: Windows 95 or above

CPU: Pentium 500Mhz or above

Memory: 256 MB RAM

HDD: More than 300 MB free space

1.2. Installation

1. Create a directory C:\BLF
2. Copy "BLFManager.exe" into C:\BLF
3. Execute BLFManager.exe.

1.3. Automatic start

To run BLF Manager automatically, put short cut link of BLFManager.exe into "Startup programs".

1.4. Configuration

The SBX system only registers to BLFManager when NET-DSS is initially set up. When the SBX is subsequently re-configured, you may need to manually edit the configuration files as shown below:

Example: systems are numbered 10.10.10.2 and 10.10.11.2

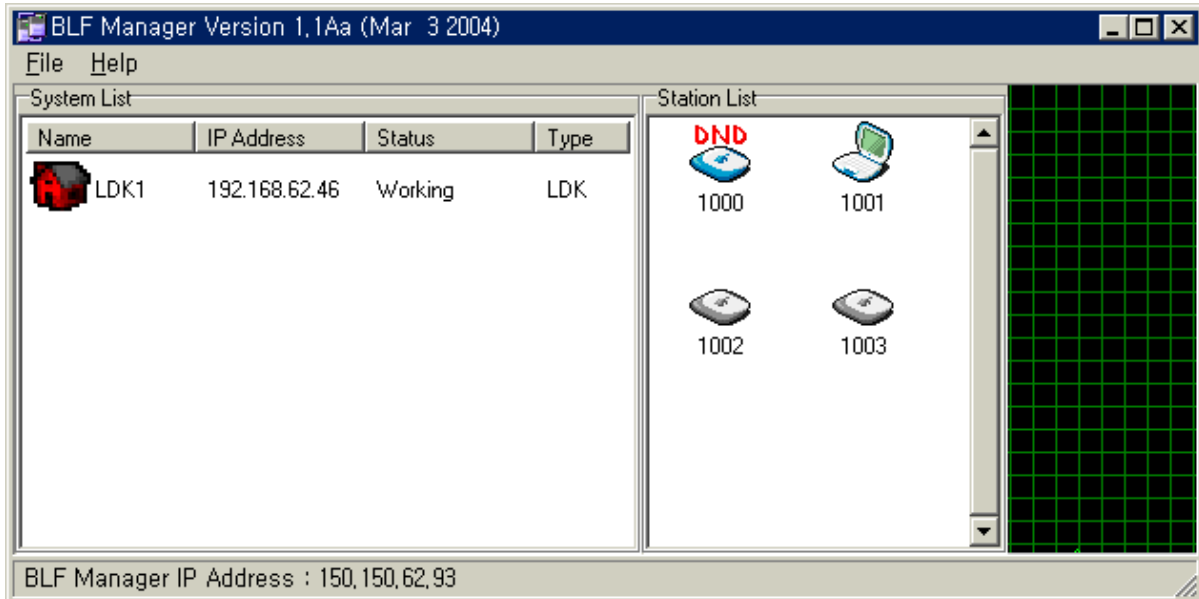
- 1 - Stop BLFManager
- 2 - Open the text file data/10.10.10.2.dat
- 3 - Add station numbers which are registered in the target 10.10.11.2 system
- 4 - Start BLFManager
- 5 - Restart 10.10.10.2 system

1.5. Uninstallation

To remove BLF Manager from server PC, just delete installation directory.

2. BLF Manager in detail

2.1. BLF Manger screen



2.2. System list window (Status of systems)

- **Name**
Show the name of system. (PGM 100 – FLEX 2, Site Name)
- **IP Address**
Show the IP address of system.
- **Status**







Status	Description
Working	The communication with system works well.
No Data	There is no data from system for over 90 seconds.
Error	There is a communication error with system.

- **Type**
It shows a protocol type that BLF Manager uses to communicate with system.
There are following two types.

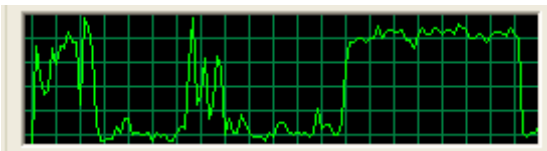
LDK	SBX IP 320 networking
Ariel	Not applicable to North America

2.3. Station list window (Extension status)

This window shows a extension status of selected system.

Icon	Status
	Station is idle.
	Station is busy.
	Station is in DND.
	Station leaves a MSG-WAIT.
	Station is disconnected with system.
	BLF Manager doesn't receive a station status.

2.4. Network traffic window



This graph shows the status of network traffic between the BLF Manager and each system.

2.5. Etc menu

- File->Initialize...
Initialize all information of BLF Manager. Delete all system information and their station information.
CAUTION: This menu must be used only when system networking configuration is redefined.
- File->Exit
Shuts down BLF Manager.