

SBX IP Release 3 Software Notice

November 2009

Contents of this document:

Description of Release 3.0	2
New and enhanced features for 3.0.....	2
Upgrading systems to Release 3	3

Description of Release 3.0

This version is updated to include support for a new BKSU, EKSU, T1/PRI, and 3x16 expansion board which allow expansion to 30 CO lines and 48 stations. In addition mailbox management, as well as the new features identified elsewhere in this notice. The release 2.5 software may be installed on systems without VMIB voice mail cards, however the new features in R2.5 are only available on systems with a VMIB card. Once released to general availability, the 2.5 build will be available to all as a free software upgrade for existing systems.

New and enhanced features for 3.0

- 1) System capacity increase to 30 CO lines x 48 stations
New BKSU/EKSU/3x16 expansion boards
- 2) T1/PRI capability
New T1/PRI combo card with 8 hybrid stations. Installs in the new BKSU in place of a 3x8 expansion board

New Software Features!

Release 3.0 adds several new software features in addition to the hardware items. Release 3.0 software can be applied to existing 1.0 – 2.5 systems in the field to take advantage of these new features!

- 1) Record a VMIB greeting remotely
Note: The password to access this is the first programmed Attendant stations mailbox password.
- 2) CO line preset forward
Allows loop start CO lines to ring multiple stations and then forward to a pre-programmed destination based on a CO line rule.
- 3) Include hunt group pilot numbers on a call coverage button
- 4) Expanded CCR error/timeout destination. Now includes the ability to route to another VMIB menu.

Upgrading systems to Release 3

Upgrade PCAdmin:

- 1) Backup the PCAdmin database files, LMASTER.CDS and LDETAIL.CDS which are found in the \data subfolder of the installation directory. (copy these files to a separate location) The installation directory is typically: C:\Program Files\Vertical Communications Inc\SBX PCADMIN\Data\
2) Run the installation program for PCAdmin; the program will detect the previous PCAdmin version and will upgrade it. 3) Restore the database files LMASTER.CDS and LDETAIL.CDS to the \data subfolder of the installation directory.

KSU Upgrade:

Steps for upgrading from Release 1.0:

- 1) Back up the system database using PCAdmin.
- 2) Install the new KSU software using PCAdmin; ensure that the system restarts. Detailed instructions follow this section.
- 3) Log into admin programming and use PGM 452 Button 1 – SAVE.
- 4) While still in admin programming, use PGM 452 Button 2 – SAVE.
- 5) Restart the KSU.
- 6) Upload and register the version 3 VMIB prompts.

Steps for upgrading from Release 2.0

The upgrade steps should be performed in the following order:

- 1) Back up the system database using PCAdmin.
- 2) Install the new KSU software using PCAdmin; ensure that the system restarts. Detailed instructions follow this section.
- 3) Log into admin programming and use PGM 452 Button 2 – SAVE.
- 4) Restart the KSU.
- 5) Upload and register the version 3 VMIB prompts.

Steps for upgrading from Release 2.5

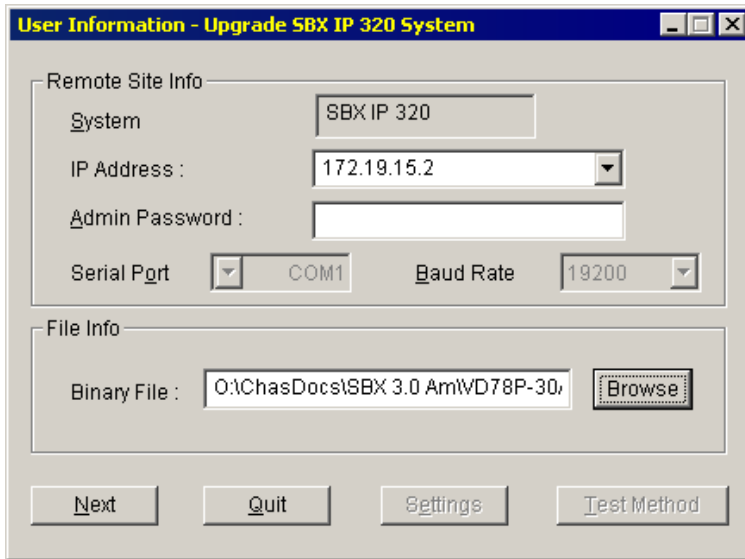
The upgrade steps should be performed in the following order:

- 1) Back up the system database using PCAdmin.
- 2) Install the new KSU software using PCAdmin; ensure that the system restarts.
Detailed instructions follow this section.
- 3) Log into admin programming and use PGM 452 Button 3 – SAVE.
- 4) Restart the KSU.
- 5) Upload and register the version 3 VMIB prompts.

Detailed steps for upgrading the KSU

Connect to the SBX system using the diagnostic console and proceed with the following steps:

- 1 Utilities Menu
- 2 "Remote Upgrade"
- 3 "TCP Connection" type
- 4 Enter the IP address of the SBX IP system. You can view this address in program area 108 when logged into Admin programming.
- 5 Browse to the location where you have saved the KSU software file
- 6 Select and Open the upgrade file.



7. Click "Next"

The next instructions and screen shots will illustrate the next steps:

- 1 Click "Start"
- 2 You will see the real-time display of files being copied
- 3 You will be notified that the system is being reset. Click "OK."
- 4 PCAdmin will ask if you want to upgrade another system. Click NO

Progress & Information - Upgrade SBX IP 320 System

User Info

File Name: O:\ChasDocs\SBX 3.0 Am\WD78P-30Am_20

IP Address: 172.19.15.2

System Info

System: SBX IP 320 Ver.: Unknown

Status: BEGINNING Retry: 0

File Transfer

Total: 2959464 Byte(s) Current: 0 Byte(s)

Progress:

Start Back Monitor Quit

Monitor Trace - Upgrade SBX IP 320 A.0Ab

Negotiating.

..OnePacket-Received[4]: 02 10 10 03

Nego_start was received

WriteData[5]: 02 10 18 00 03

..Password is being confirmed.-OnePacket-Received[4]: 02 10 19 03

: Password was confirmed

WriteData[6]: 02 10 11 01 11 03

..Upgrade Service is being requested.-OnePacket-Received[6]: 02 10 12 01 11 03

: Upgrade Service was confirmed

WriteData[4]: 02 10 14 03

..Version is being requested.-OnePacket-Received[16]: 02 10 15 0b 56 44 37 38 50 2d 43

: Got version [VD78P-C.0A]

WriteData[6]: 02 10 16 01 11 03

Start was requested.-OnePacket-Received[6]: 02 10 17 01 11 03

: Ready to start

WriteData[8]: 02 11 10 03 10 00 00 03

Checking Boot ROM Checksum.-OnePacket-Received[6]: 02 11 11 01 10 03

: Boot ROM confirmed

Negotiating...Success

Sending data.

SocketThread_SendData is executed.

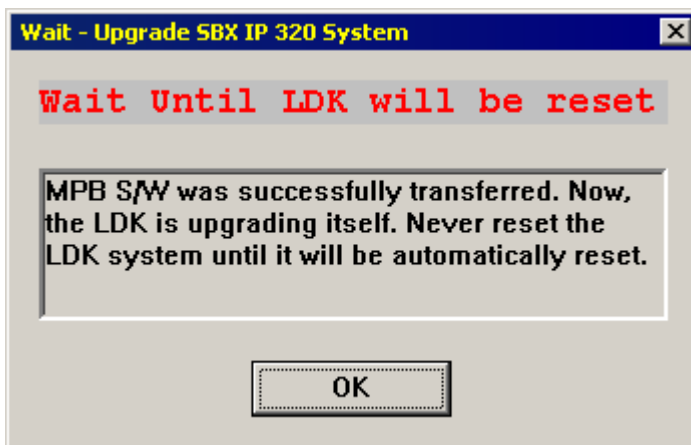
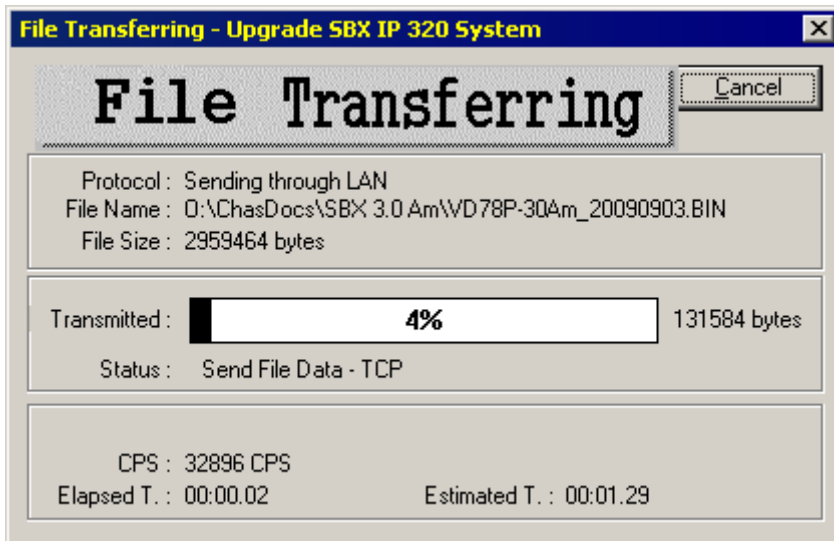
START OF ZMODEM SENDING

TCP Socket Connect(): success

TCP_FASTDataSend : filesize : 2959464 bytes

Copyright(C) 2006 LG-Nortel Co. Ltd.

Cancel



Uploading and registering new VMIB prompts

For proper feature operation, updating the VMIB system prompts must be performed.

Conditions:

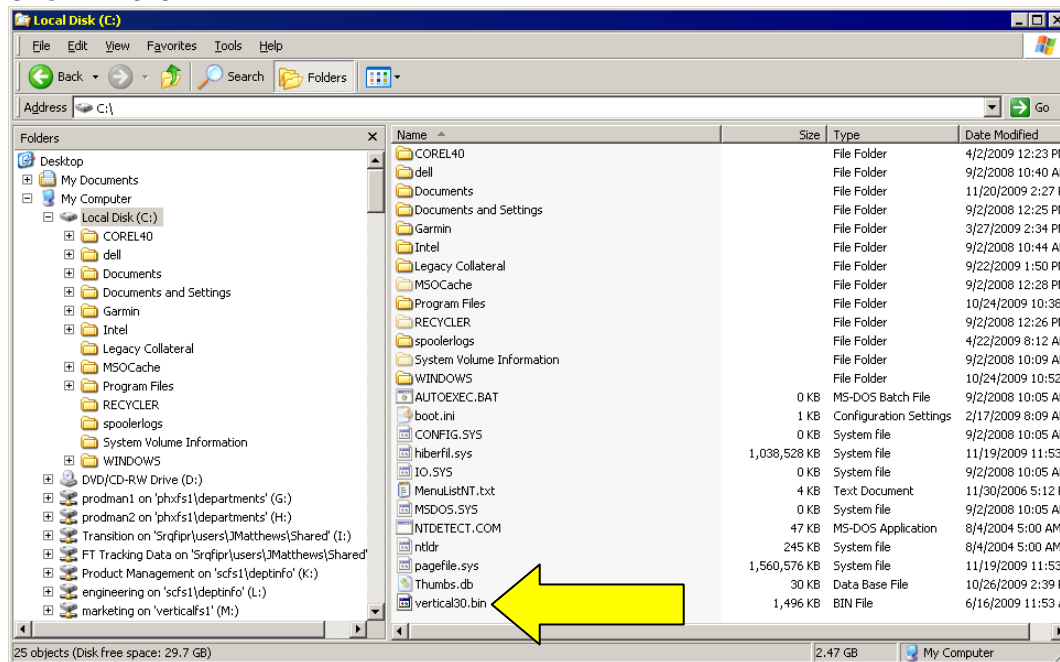
The SBX IP must be programmed with an IP address for the local network (PGM 108) and must be connected.

VMIB must be installed in the system.

The appropriate voice prompt file (*.bin) obtained from Vertical.

Procedure:

- 1 Place a copy of the VMIB prompt file named 'vertical30.bin' on drive C:\ as shown here:

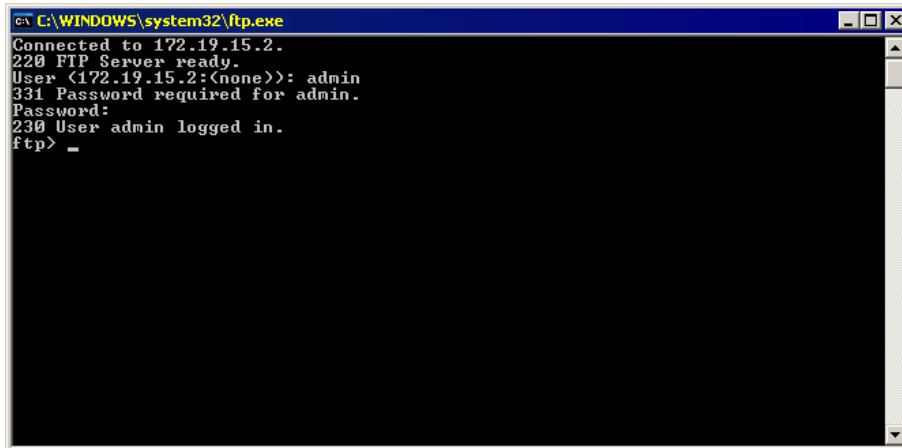


- 2 Launch an FTP client application. The example below shows the Windows command line FTP client.

- 3 Log on to the SBX system via FTP (in the following example, 172.19.15.2 is used as the local network address of the SBX 10/100 LAN port)

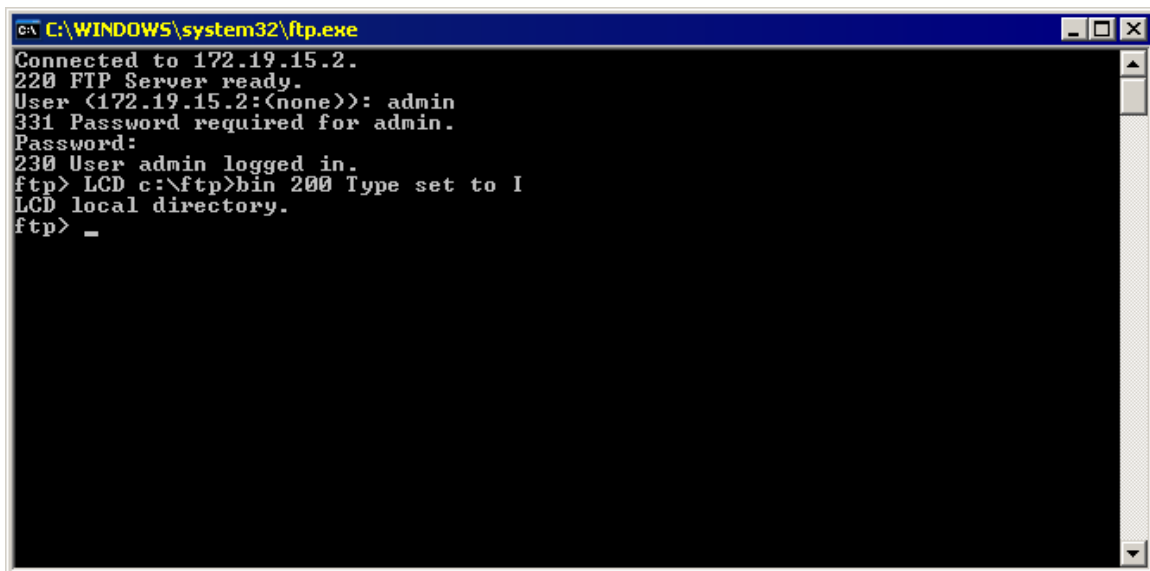
```
c:\>ftp 172.19.15.70
Connected to 172.19.15.70
220 FTP Server ready.
```

User (172.19.15.70:(none)): admin
331 Password required for admin.
Password: admin(hidden)
230 User logged in.
ftp>



```
C:\WINDOWS\system32\ftp.exe
Connected to 172.19.15.2.
220 FTP Server ready.
User (172.19.15.2:(none)): admin
331 Password required for admin.
Password:
230 User admin logged in.
ftp> _
```

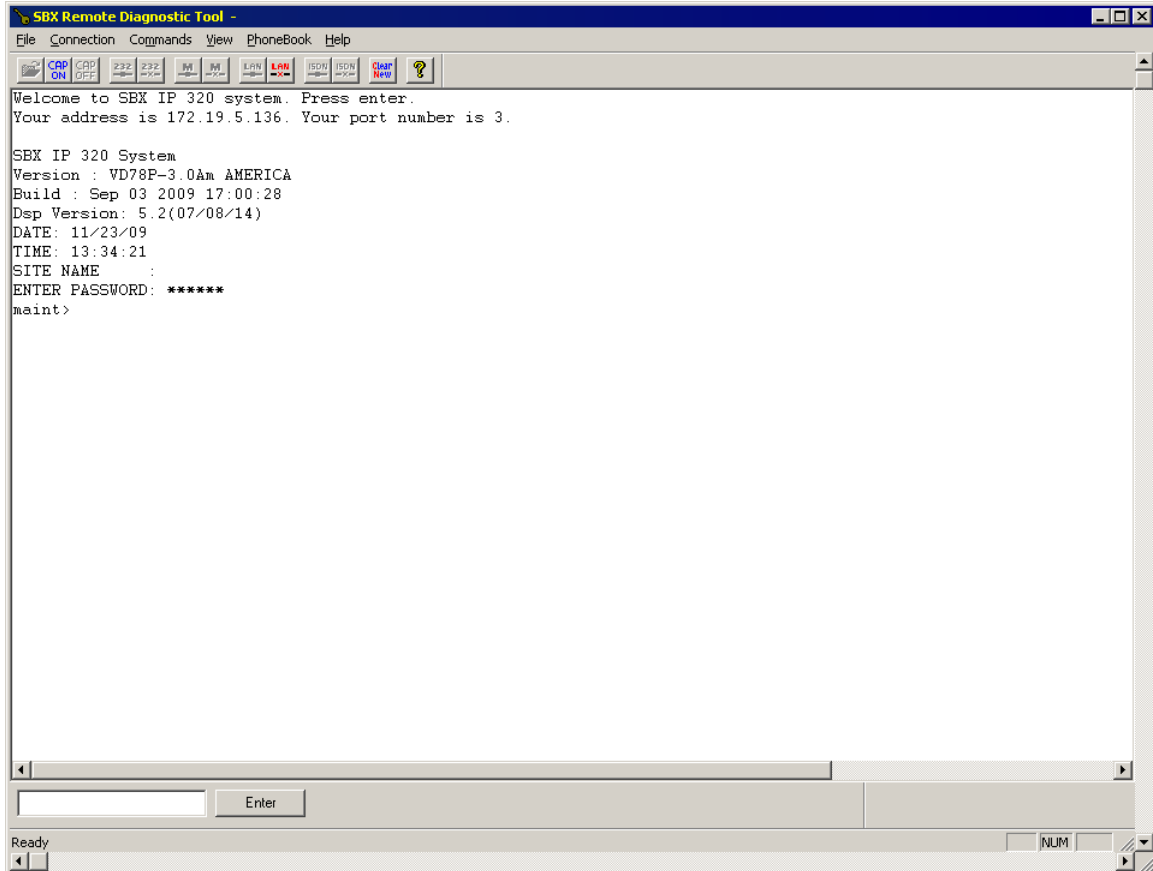
4. In ftp command mode ftp> LCD c:\ ftp> bin 200 Type set to I



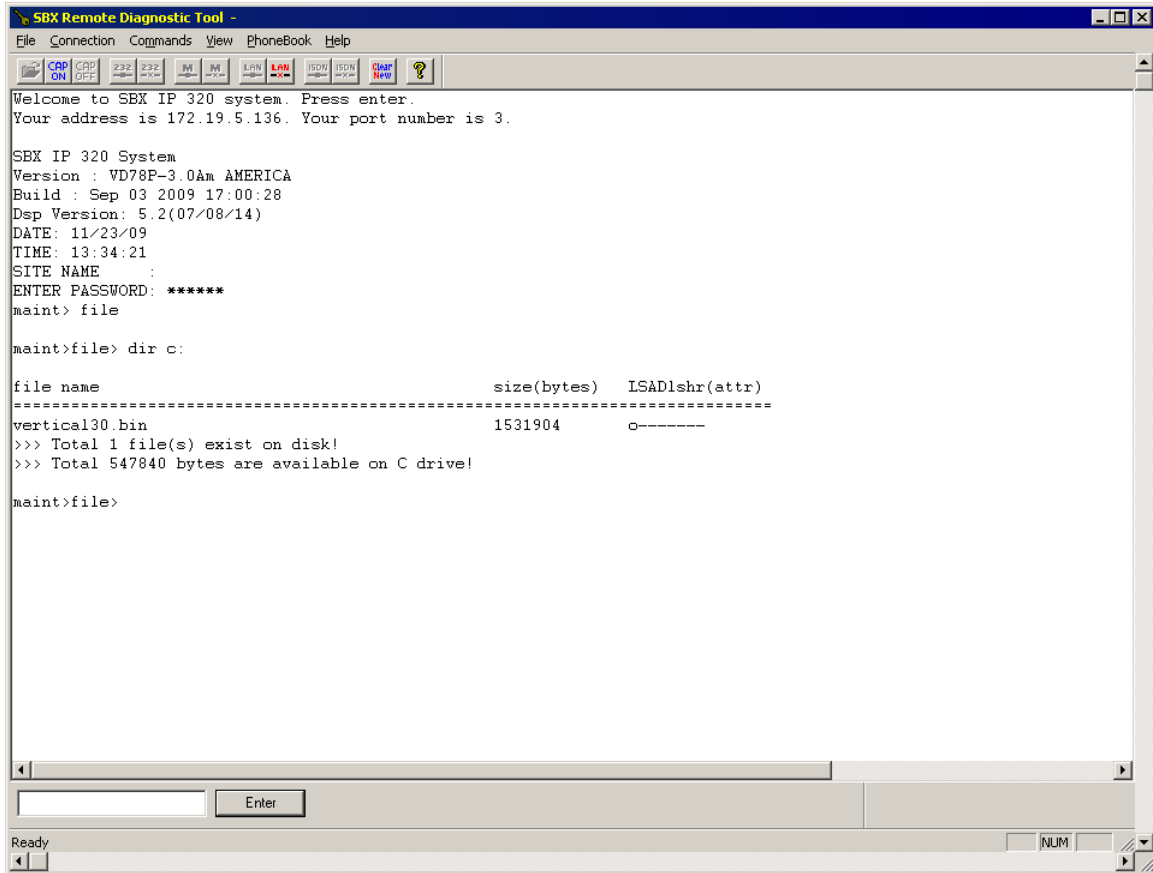
```
C:\WINDOWS\system32\ftp.exe
Connected to 172.19.15.2.
220 FTP Server ready.
User (172.19.15.2:(none)): admin
331 Password required for admin.
Password:
230 User admin logged in.
ftp> LCD c:\ftp>bin 200 Type set to I
LCD local directory.
ftp> _
```


1 From PCAdmin, use the Remote Diagnostic tool to connect to the SBX system via TCP connection.

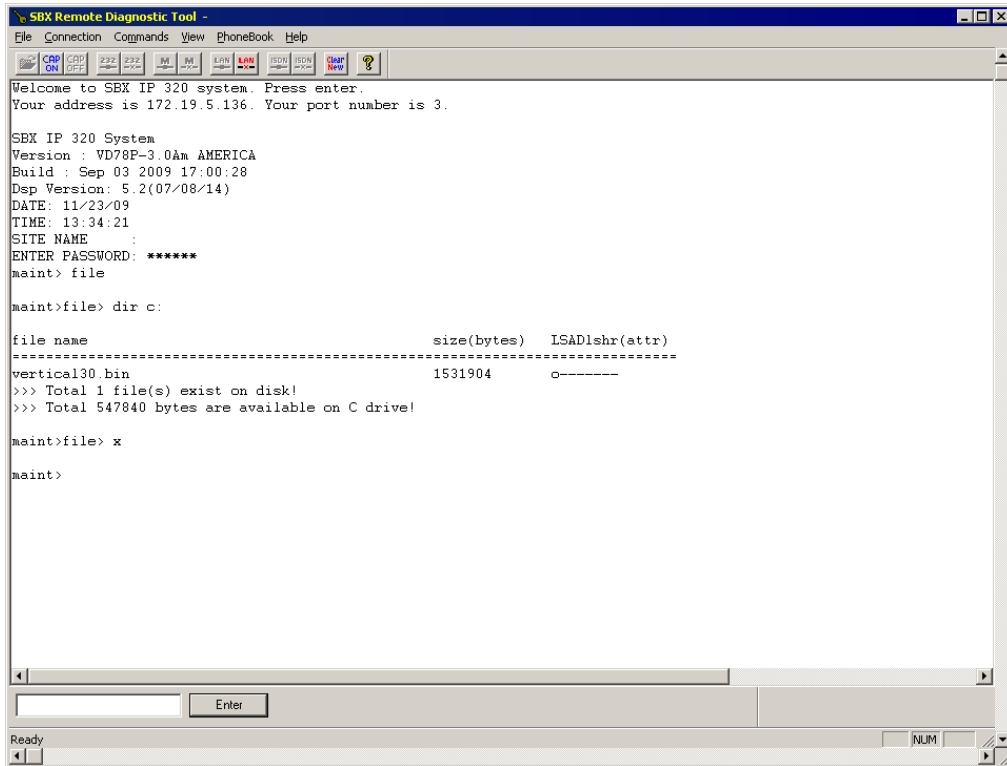
2 Enter 'maint' mode (password : brandy)



3 Verify that the prompt file is on the virtual disk. To do so, enter the commands 'file' and then 'dir c':

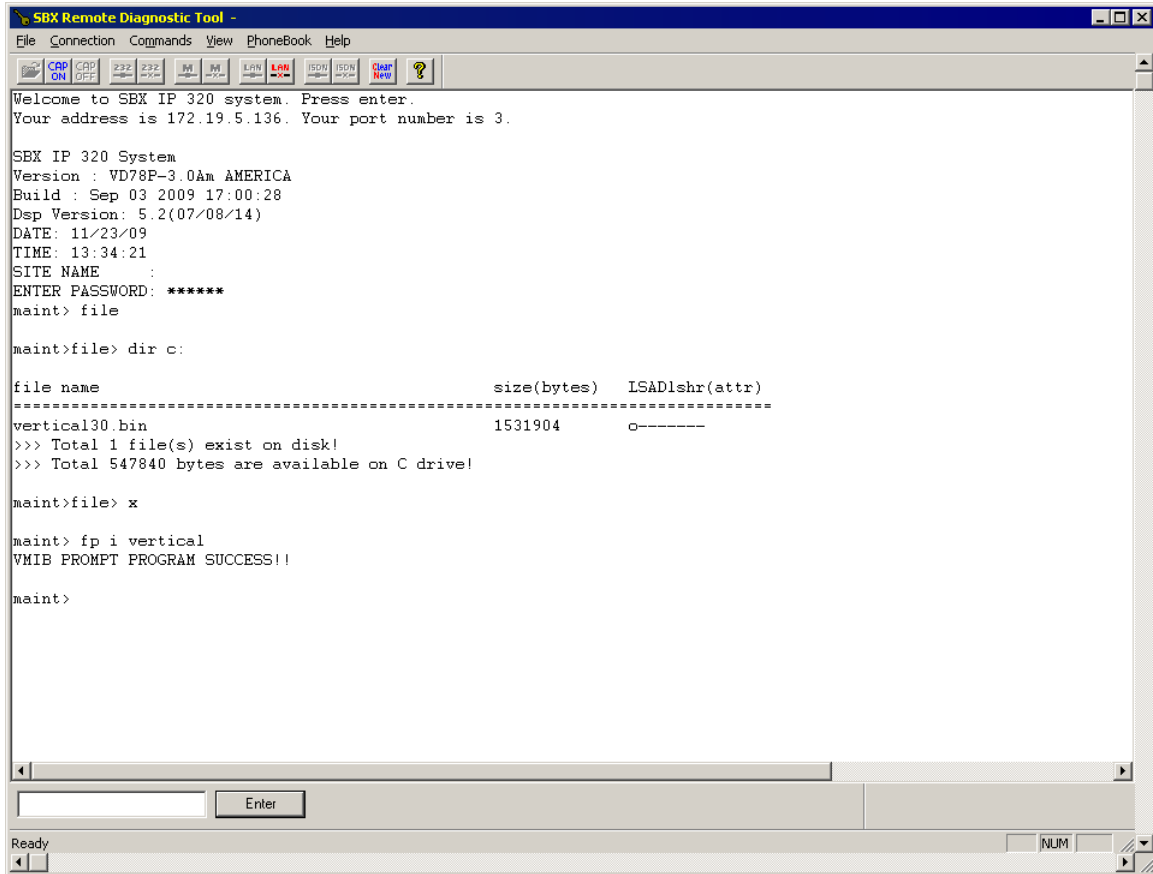


4 Use 'x' to exit the file menu back to the maint menu maint>file> x maint>



5 Burn the prompt file to the VMIB using this command:

```
fp i vertical maint>fp i vertical
```



In the step above, the correct command and argument is: fp i vertical . Entering fp i vertical30.bin is incorrect.

6 Type X to exit the maintenance mode.

7 Reboot the SBX system. Test the system and voice mail.